



Value and Relevance for Member Chapters

Huronian Chapter AGM
February 17, 2024

John Pineau
Executive Director
Ontario Woodlot Association

31st OWA Conference and Annual Meeting - a Success in the Making!

Restoration and Resilience
April 23rd to 24th, 2024

Horseshoe Resort
Hurononia Chapter



Presentation Overview – Focus for Today

- **Intrinsic Value**
- **Programs and Projects**
- **Connectedness**
- **Advocacy and Outreach**
- **Leverage**



Intrinsic Value



ONTARIO
WOODLOT
ASSOCIATION



EASTERN ONTARIO
MODEL FOREST
www.comf.on.ca



Canadian Institute of Forestry
Institut forestier du Canada



Strategically Well Defined

VISION

Ensuring the sustainability of Ontario's privately owned forests now and in the future.

MISSION

Helping each other to become the best possible stewards of our woodlands!

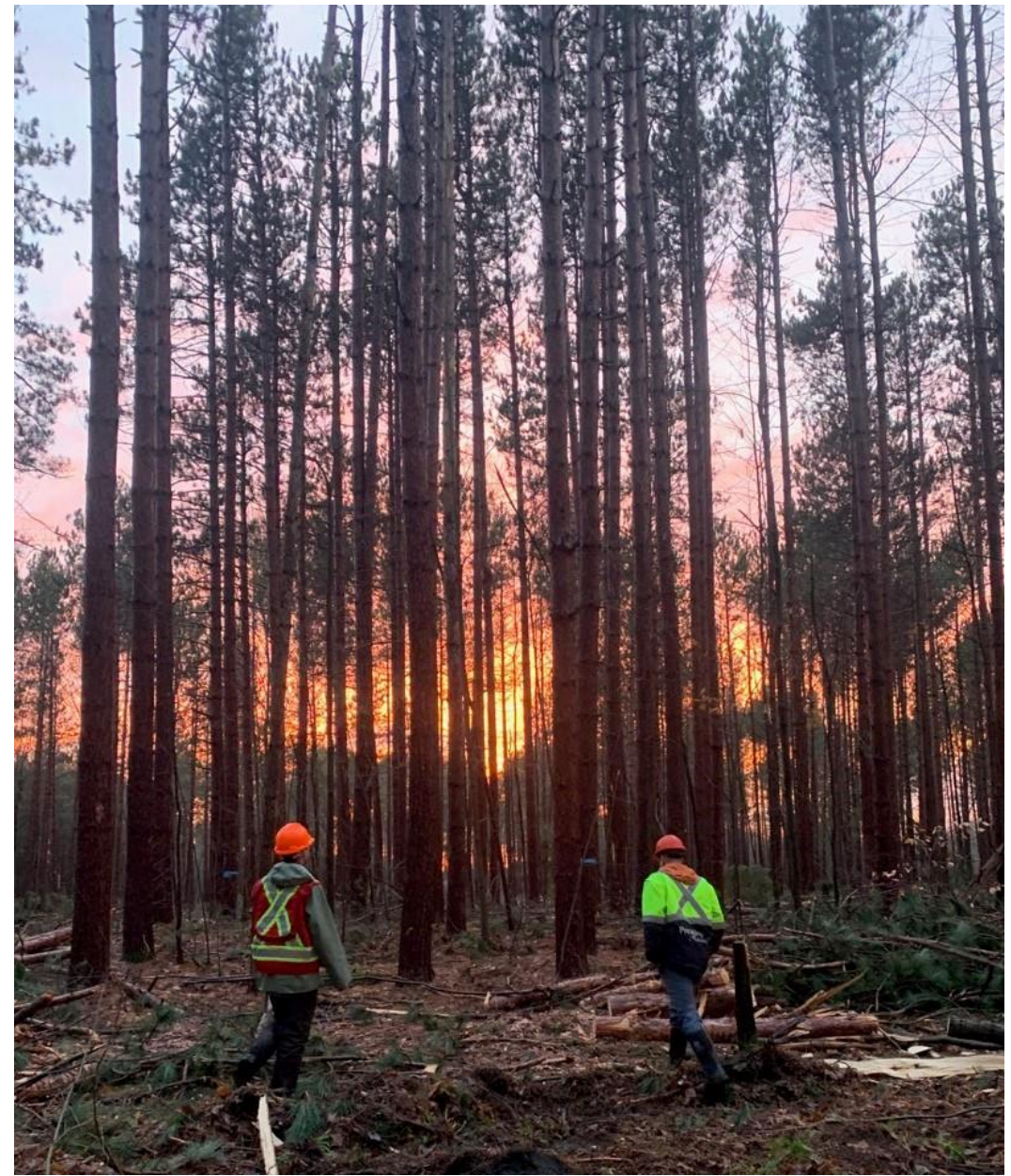
VALUES

As an organization built by enthusiastic and engaged people, committed to using best management practices, we want our woodlots to be:

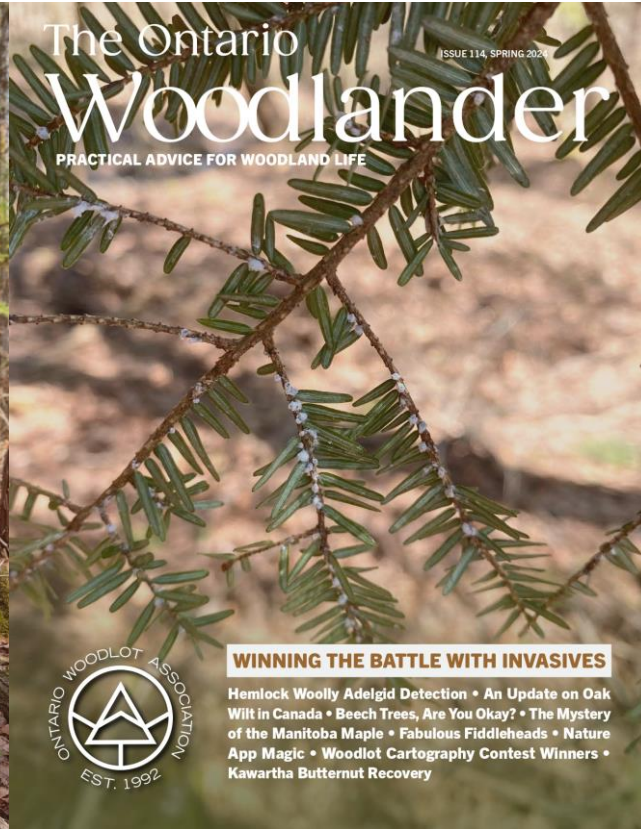
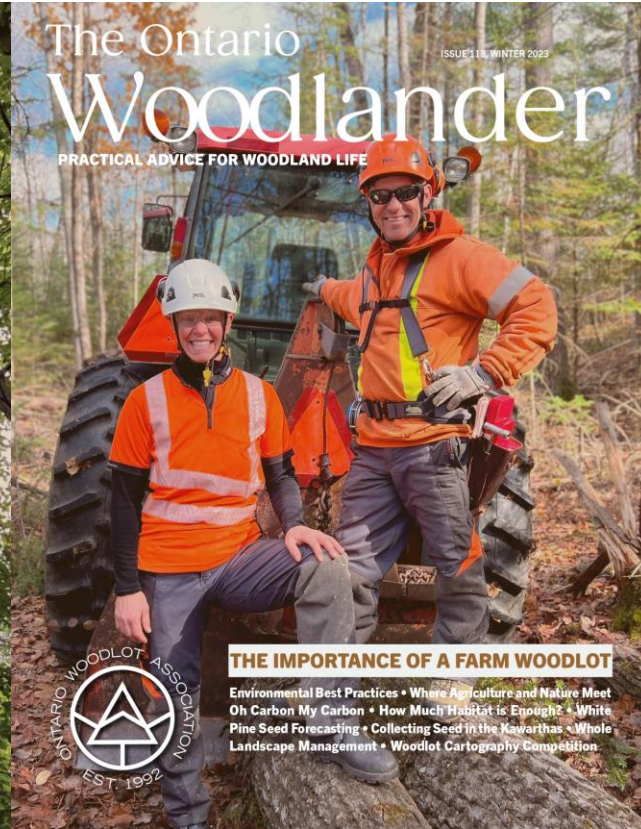
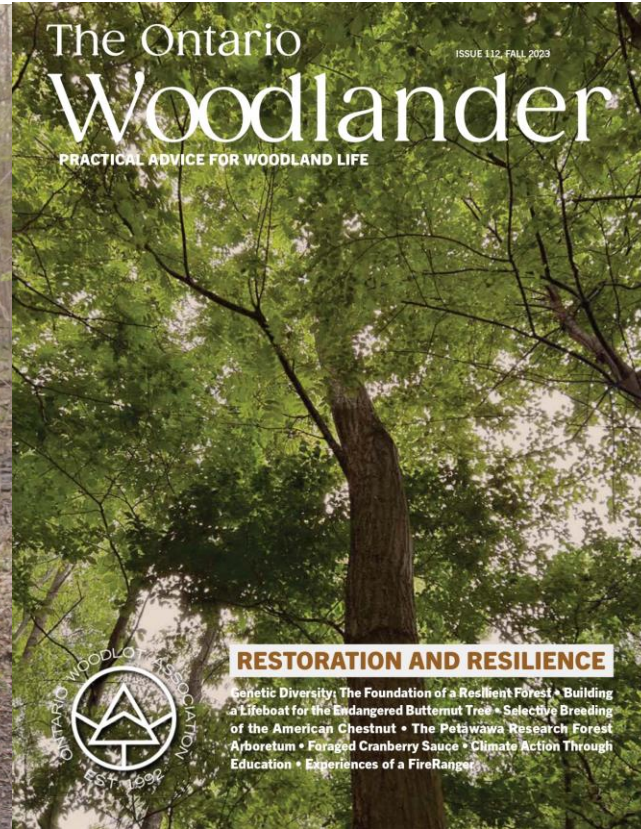
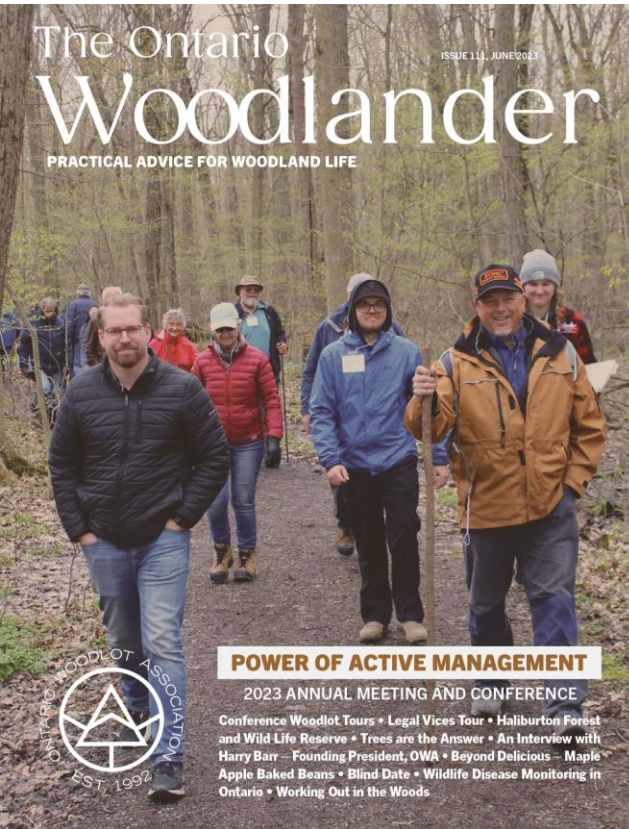
- Sustainable and productive
- Ecologically healthy and diverse
- Spiritually and physically renewing

Our Value Proposition

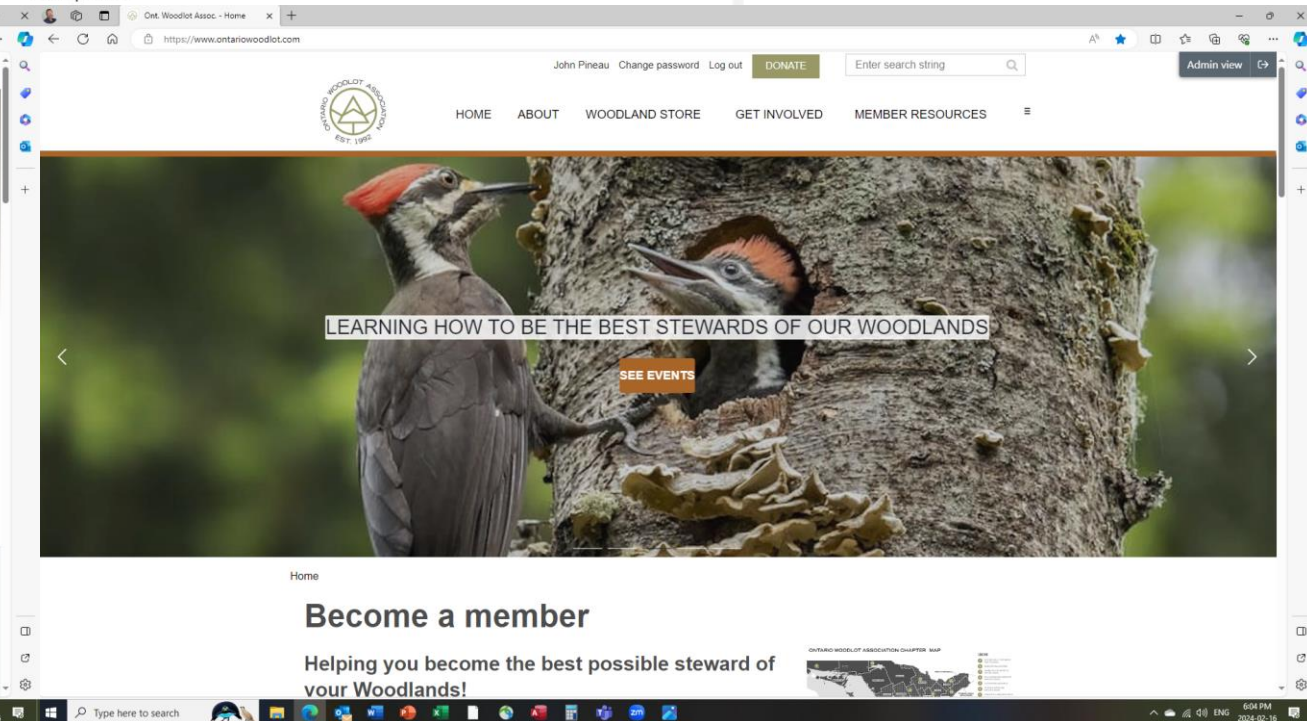
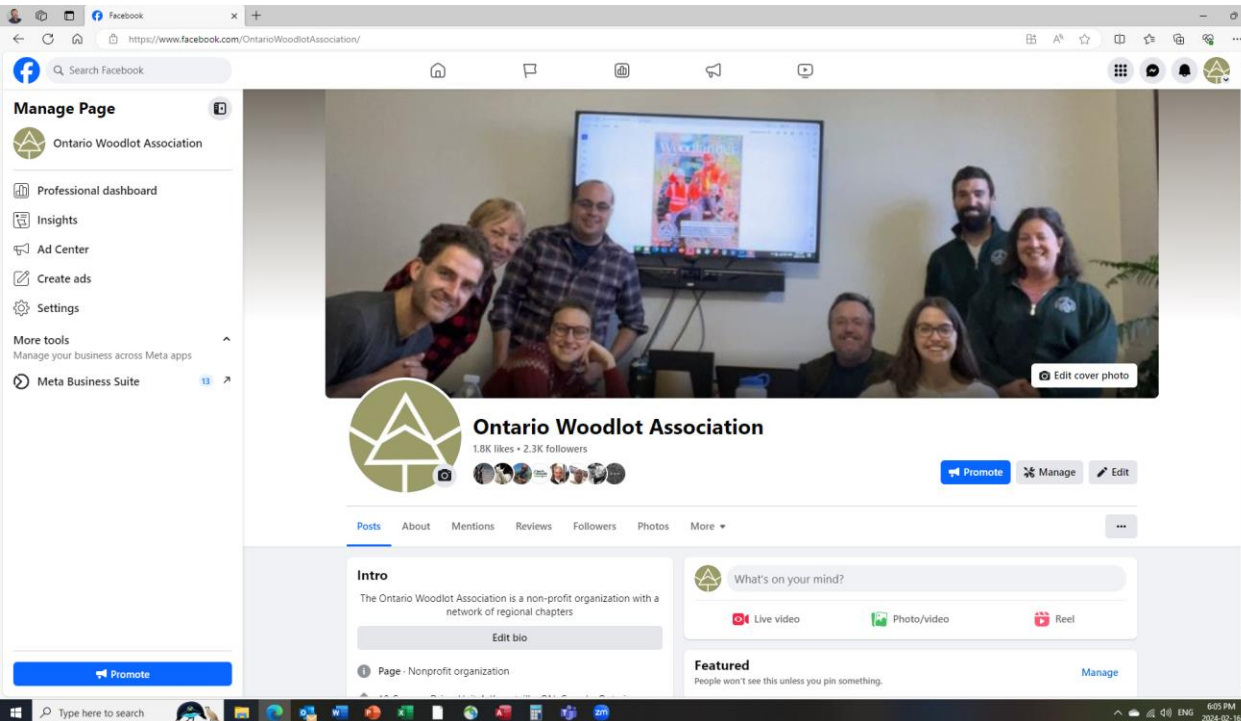
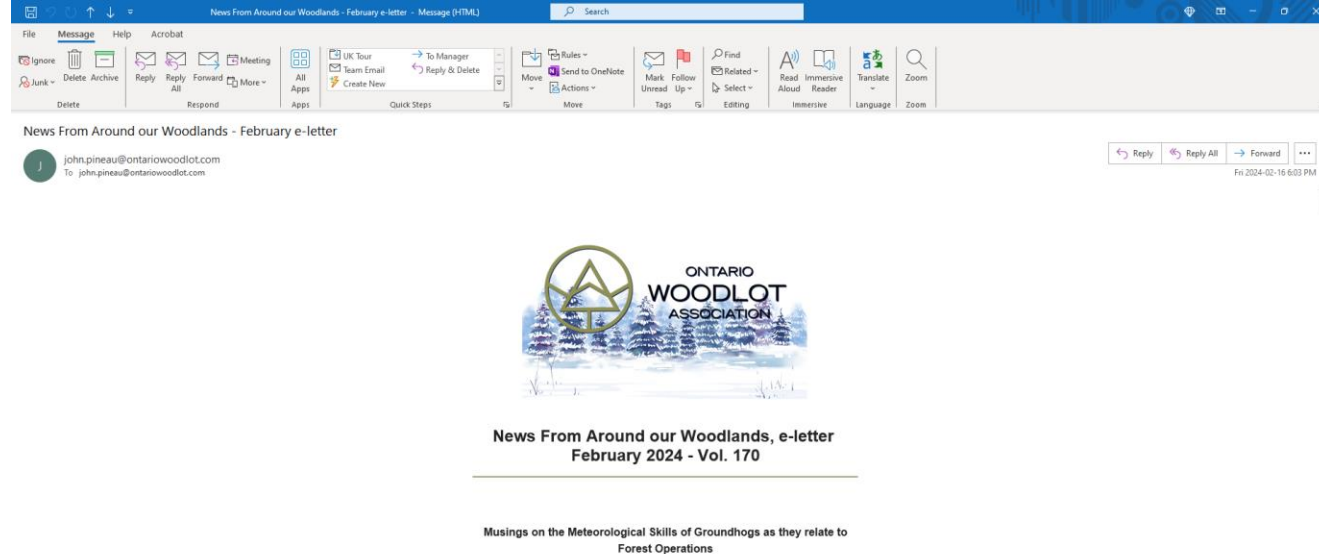
We are a community of woodlot owners that live, work and play in our forests. Together we restore, manage and advocate for healthy forest ecosystems.



The Ontario Woodlander



Modern Media



Cool Swag



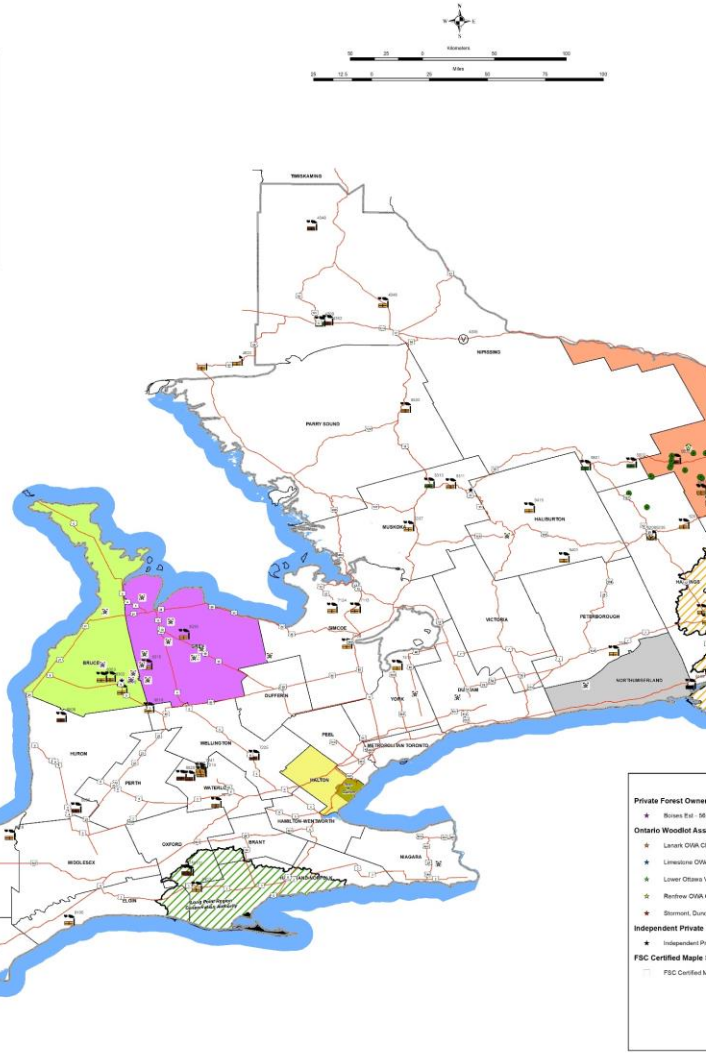
Programs and Projects



Forest Certification

Eastern Ontario Model Forest - Forest Certification Program

WPPID	NAME	TWN	ISSUES	Facility Type
1001	1001 Paper Mills	King	1001	Energy
1002	1002 Paper Mills	King	1002	White Tree Chipper
1003	1003 Paper Mills	King	1003	Pulp
1004	1004 Paper Mills	King	1004	Pulp
1005	1005 Paper Mills	King	1005	Pulp
1006	1006 Paper Mills	King	1006	Pulp
1007	1007 Paper Mills	King	1007	Pulp
1008	1008 Paper Mills	King	1008	Pulp
1009	1009 Paper Mills	King	1009	Pulp
1010	1010 Paper Mills	King	1010	Pulp
1011	1011 Paper Mills	King	1011	Pulp
1012	1012 Paper Mills	King	1012	Pulp
1013	1013 Paper Mills	King	1013	Pulp
1014	1014 Paper Mills	King	1014	Pulp
1015	1015 Paper Mills	King	1015	Pulp
1016	1016 Paper Mills	King	1016	Pulp
1017	1017 Paper Mills	King	1017	Pulp
1018	1018 Paper Mills	King	1018	Pulp
1019	1019 Paper Mills	King	1019	Pulp
1020	1020 Paper Mills	King	1020	Pulp
1021	1021 Paper Mills	King	1021	Pulp
1022	1022 Paper Mills	King	1022	Pulp
1023	1023 Paper Mills	King	1023	Pulp
1024	1024 Paper Mills	King	1024	Pulp
1025	1025 Paper Mills	King	1025	Pulp
1026	1026 Paper Mills	King	1026	Pulp
1027	1027 Paper Mills	King	1027	Pulp
1028	1028 Paper Mills	King	1028	Pulp
1029	1029 Paper Mills	King	1029	Pulp
1030	1030 Paper Mills	King	1030	Pulp
1031	1031 Paper Mills	King	1031	Pulp
1032	1032 Paper Mills	King	1032	Pulp
1033	1033 Paper Mills	King	1033	Pulp
1034	1034 Paper Mills	King	1034	Pulp
1035	1035 Paper Mills	King	1035	Pulp
1036	1036 Paper Mills	King	1036	Pulp
1037	1037 Paper Mills	King	1037	Pulp
1038	1038 Paper Mills	King	1038	Pulp
1039	1039 Paper Mills	King	1039	Pulp
1040	1040 Paper Mills	King	1040	Pulp
1041	1041 Paper Mills	King	1041	Pulp
1042	1042 Paper Mills	King	1042	Pulp
1043	1043 Paper Mills	King	1043	Pulp
1044	1044 Paper Mills	King	1044	Pulp
1045	1045 Paper Mills	King	1045	Pulp
1046	1046 Paper Mills	King	1046	Pulp
1047	1047 Paper Mills	King	1047	Pulp
1048	1048 Paper Mills	King	1048	Pulp
1049	1049 Paper Mills	King	1049	Pulp
1050	1050 Paper Mills	King	1050	Pulp
1051	1051 Paper Mills	King	1051	Pulp
1052	1052 Paper Mills	King	1052	Pulp
1053	1053 Paper Mills	King	1053	Pulp
1054	1054 Paper Mills	King	1054	Pulp
1055	1055 Paper Mills	King	1055	Pulp
1056	1056 Paper Mills	King	1056	Pulp
1057	1057 Paper Mills	King	1057	Pulp
1058	1058 Paper Mills	King	1058	Pulp
1059	1059 Paper Mills	King	1059	Pulp
1060	1060 Paper Mills	King	1060	Pulp
1061	1061 Paper Mills	King	1061	Pulp
1062	1062 Paper Mills	King	1062	Pulp
1063	1063 Paper Mills	King	1063	Pulp
1064	1064 Paper Mills	King	1064	Pulp
1065	1065 Paper Mills	King	1065	Pulp
1066	1066 Paper Mills	King	1066	Pulp
1067	1067 Paper Mills	King	1067	Pulp
1068	1068 Paper Mills	King	1068	Pulp
1069	1069 Paper Mills	King	1069	Pulp
1070	1070 Paper Mills	King	1070	Pulp
1071	1071 Paper Mills	King	1071	Pulp
1072	1072 Paper Mills	King	1072	Pulp
1073	1073 Paper Mills	King	1073	Pulp
1074	1074 Paper Mills	King	1074	Pulp
1075	1075 Paper Mills	King	1075	Pulp
1076	1076 Paper Mills	King	1076	Pulp
1077	1077 Paper Mills	King	1077	Pulp
1078	1078 Paper Mills	King	1078	Pulp
1079	1079 Paper Mills	King	1079	Pulp
1080	1080 Paper Mills	King	1080	Pulp
1081	1081 Paper Mills	King	1081	Pulp
1082	1082 Paper Mills	King	1082	Pulp
1083	1083 Paper Mills	King	1083	Pulp
1084	1084 Paper Mills	King	1084	Pulp
1085	1085 Paper Mills	King	1085	Pulp
1086	1086 Paper Mills	King	1086	Pulp
1087	1087 Paper Mills	King	1087	Pulp
1088	1088 Paper Mills	King	1088	Pulp
1089	1089 Paper Mills	King	1089	Pulp
1090	1090 Paper Mills	King	1090	Pulp
1091	1091 Paper Mills	King	1091	Pulp
1092	1092 Paper Mills	King	1092	Pulp
1093	1093 Paper Mills	King	1093	Pulp
1094	1094 Paper Mills	King	1094	Pulp
1095	1095 Paper Mills	King	1095	Pulp
1096	1096 Paper Mills	King	1096	Pulp
1097	1097 Paper Mills	King	1097	Pulp
1098	1098 Paper Mills	King	1098	Pulp
1099	1099 Paper Mills	King	1099	Pulp
1100	1100 Paper Mills	King	1100	Pulp



EASTERN ONTARIO
MODEL FOREST
www.eomf.on.ca

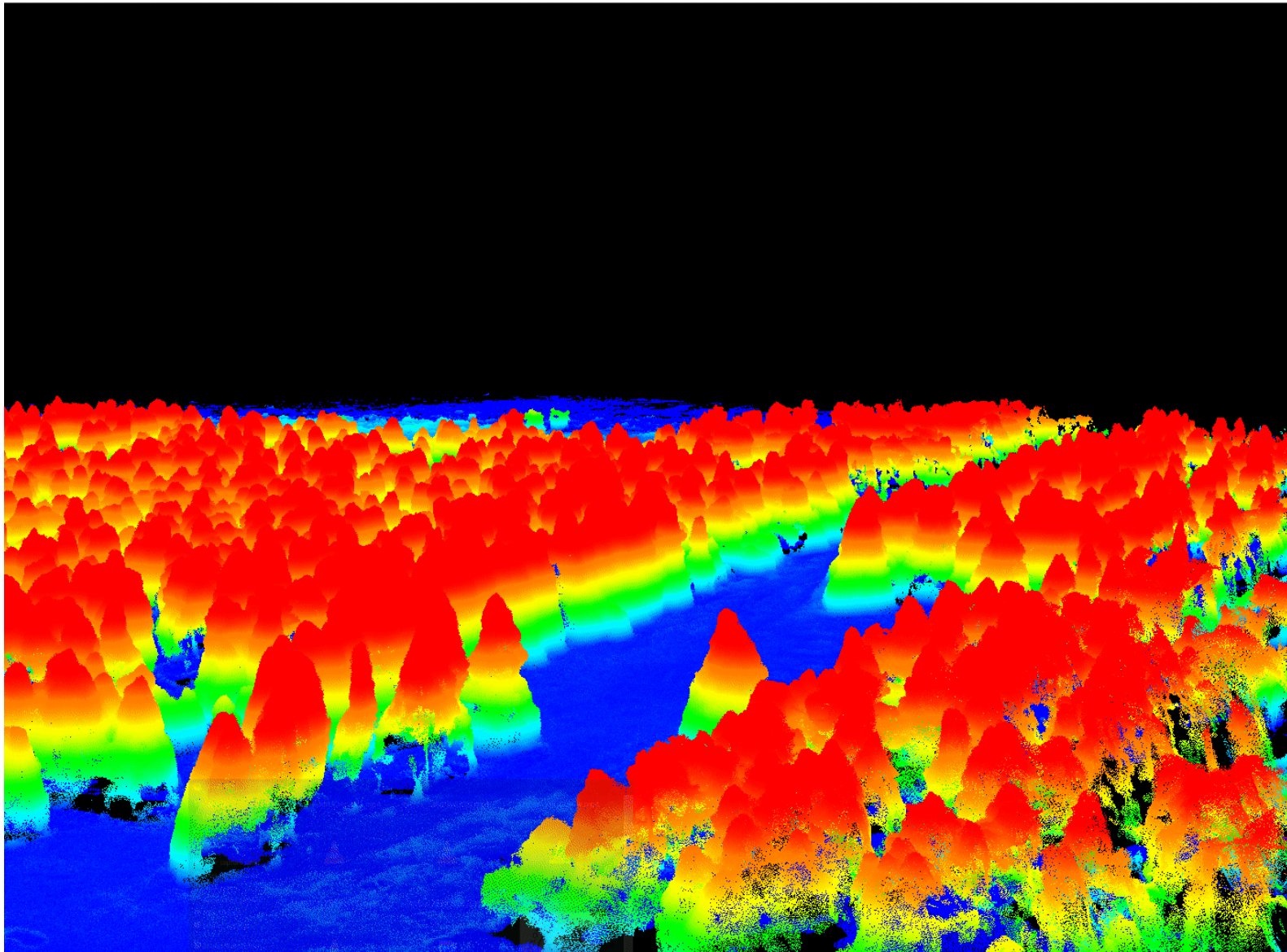
Legend

- Private Forest Owner Groups - 6,632.6 HA**
 - Rivers Est - 568.9
- Ontario Woodlot Association Chapters - 5,626.5 HA**
 - Lanark OWA Chapter
 - Limestone OWA Chapter
 - Lower Ottawa Valley OWA Chapter
 - Renfrew OWA Chapter
 - Stormont, Dundas & Glengarry Chapter of the OWA
- Independent Private Forest Owners - 437.2 HA**
 - Independent Private Forest Owners
- FSC Certified Maple Syrup Producers - RA-NTFD-00232**
 - FSC Certified Maple Syrup Producers - 8,650 Tons
- Private Commercial Forest Owners - 2,318.4 HA**
 - Lorenz Heiderman & Son Ltd. - 800.0 HA
 - Murray Brothers Lumber Company Ltd. - 1,518.4 HA
- Independent Forest Managers - 621.6 HA**
 - Lands & Forests Consulting - 451.8 HA
 - Forest Design Ltd. - 24.3 HA
 - Central Ontario Forestry Services - 145.5 HA
- Community Forests - 65,217.9 HA**
 - Long Point Region Conservation Authority - 4,481.5 HA
 - Quinte Conservation - 12,225.0 HA
 - South Nation Conservation - 4,355.2 HA
 - Town of Oakville - 842.0 HA
 - River County Forest - 4,863.0 HA
 - Grey County Forest - 3,204.1 HA
 - Yates Region Forest - 665.0 HA
 - Lanark County Forest - 4,983.0 HA
 - Lanark & Orleans - Limerick Forest - 6,033.0 HA
 - Northumberland County Forest - 2,225.0 HA
 - Prescott & Russell - LaRose Forest - 11,082.1 HA
 - Renfrew County Forest - 5,527.0 HA
 - Stormont, Dundas & Glengarry County Forest - 3,951.8 HA
- General Features**
 - Major Highway
 - Provincial Boundary
 - Municipal Boundary
 - Major Rivers and Lakes

This map is for informational purposes only. It is not intended to be used as a legal document. The information on this map is based on the most current data available. The information on this map is subject to change without notice. The information on this map is not guaranteed to be accurate. The information on this map is not intended to be used as a legal document. The information on this map is based on the most current data available. The information on this map is subject to change without notice. The information on this map is not guaranteed to be accurate. The information on this map is not intended to be used as a legal document.



Private Land Forest Inventory



Community Forest Owners Cooperatives



Stewardship Awards and Recognition Program



Other Projects

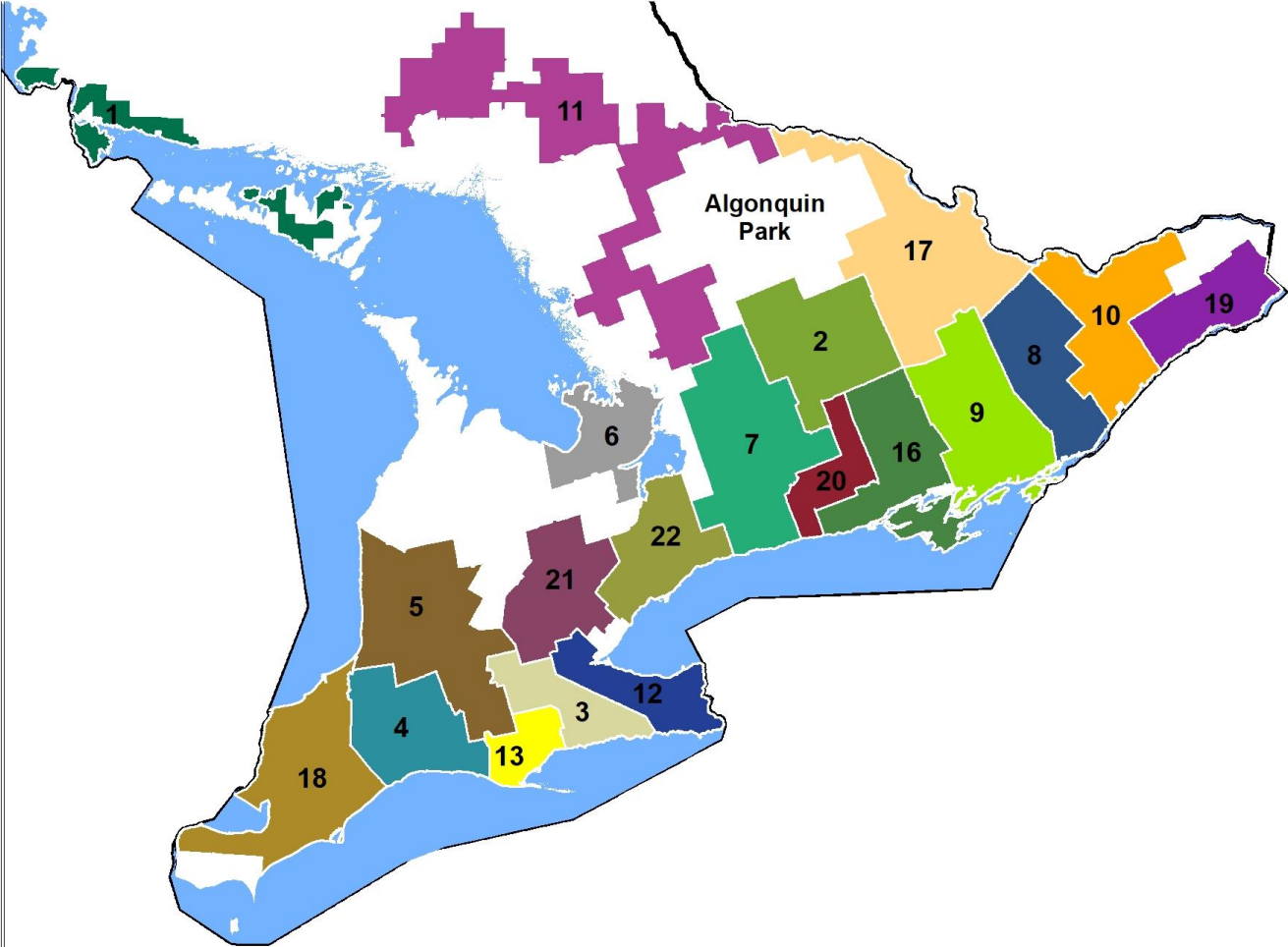
- Forest Biomass
- Farm Woodlot Management (Agroforestry)
- High Value Conservation Areas
- Municipal Bylaw Analysis
- Six Nations Forest Restoration
- Engineered Wood from Red Pine First Thinnings
- Indigenous Values and Cultural Mindfulness
- Managing Your Woodlot for Climate Change Course



Connectedness



ONTARIO WOODLOT ASSOCIATION CHAPTER MAP



LEGEND

1	Algoma (Sault Ste Marie/North Shore)
2	Bancroft/Haliburton
3	Brant County Woodlot Owners Association
4	Elgin/Middlesex Woodlot Owners Association
5	Huron/Perth Counties
6	Huronian Woodland Owner's Association
7	Kawartha (Lindsay/Minden)
8	Lanark & District Chapter
9	Limestone (Kingston/Napanee)
10	Lower Ottawa Valley
11	Near North (North Bay/Huntsville Region)
12	Niagara
13	Northfolk Woodlot Owners Association
15	Provincial (Members not affiliated with any Chapter)
16	Quinte
17	Renfrew County
18	Southwest Woodlot Owners Association
19	Stormont Dundas & Glengarry
20	Upper Trent Valley (Mamora/Peterborough)
21	Waterloo/Wellington Woodlot Owners Association
22	York/Durham Chapter

A member of Canadian Forest Owners (CFO)

- 450,000 forest landowners
- 10% of managed forest land in Canada
- 20% of forest production in Canada
- 25M hectares of Canada's managed forest land is privately owned
- 19M hectares is private woodlots averaging 40 ha. in size owned by rural families
- 6 million hectares is private industrial forest, averaging 10,000 ha. in size, owned by a mix of forest products companies, individuals, municipalities, pension funds and other organizations.



**CANADIAN
FOREST
OWNERS** | **PROPRIÉTAIRES
FORESTIERS *du*
CANADA**

CFO Members – Connected to National Counterparts

Representing Forest Owners Large and Small...



Propriétaires de lots boisés



<https://www.forestowners.ca/members/>



International Model Forest Network

Vision

- That natural resources around the world are sustainably managed through a participatory, landscape-level approach that reflects environmental and socio-economic issues from the perspectives of local needs and global concerns.

Mission

- To establish a global network that represents most of the major forest ecosystems of the world. The IMFN strives to ensure that all partners, regardless of political or economic status, can contribute to and share in the benefits of the Network.

Regional Networks

- The Canadian Model Forest Network
- The Latin-American Model Forest Network
- The African Model Forest Network
- The Mediterranean Model Forest Network
- Northern Europe and Russia
- The Regional Model Forest Network for Asia



International
Model Forest
Network

Partners and Funders!



MNDMNRF



FORESTRY
FUTURES
TRUST
ONTARIO



KAWARTHA LAND TRUST



Environment and
Climate Change Canada
Environnement et
Changement climatique Canada



UNIVERSITY OF
TORONTO



Advocacy and Outreach



On-going Initiatives

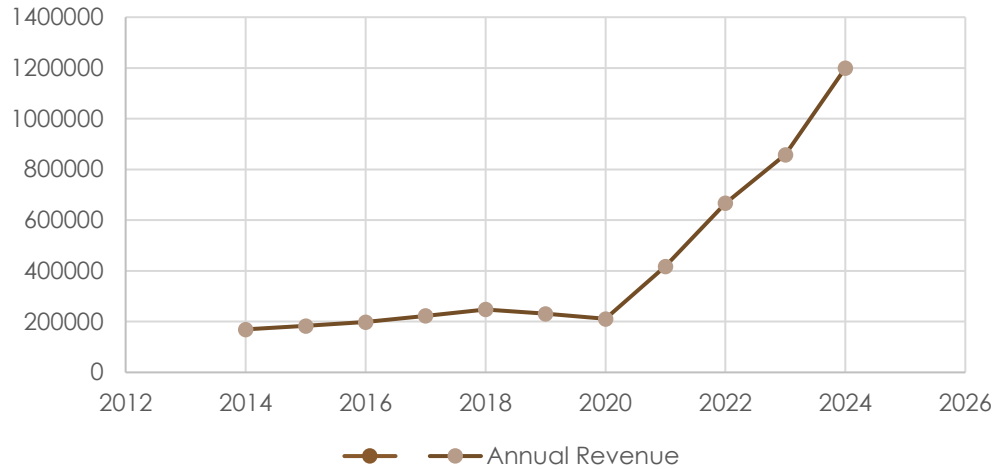
- Black Ash Conservation Based on Science
- Hemlock Woolly Adelgid Controls
- Municipal Bylaw Development Input (Kawarthas)
- Land Clearing Bylaw Input (Southwest)
- Management of non-SFL Public Forests
- Private Land Silviculture Savings Plan (CFO)
- Migratory Bird Act Input Based on Science (CFO)
- Support and Promotion of MFTIP
- Partnership Initiatives Support



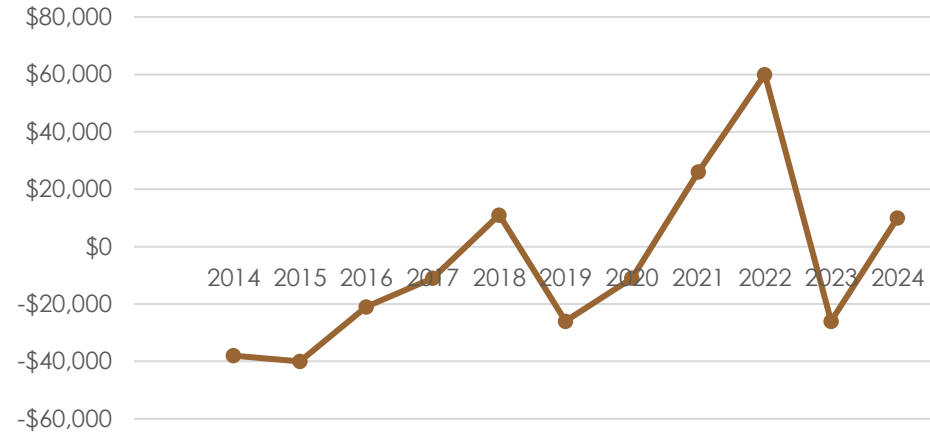
Leverage



OWA Annual Gross Revenue (2014-2024)

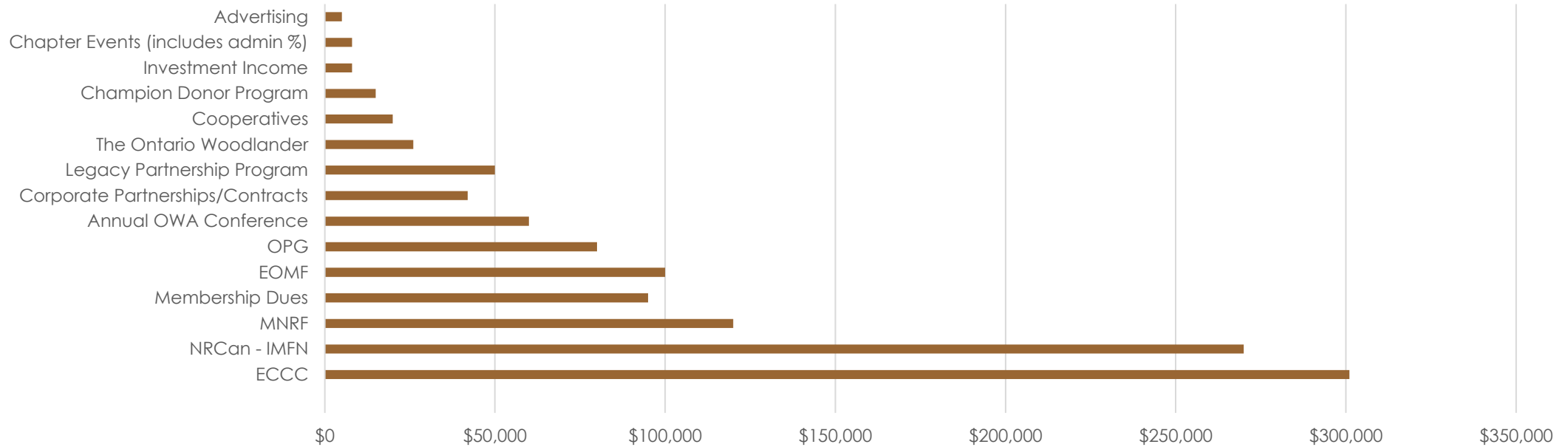


OWA Annual Deficit vs. Surplus (2014-2024)



Year	Annual Gross Revenue	Year	Annual Bottom Line	Notes
2014	\$169,000	2014	-\$38,000	
2015	\$183,000	2015	-\$40,000	
2016	\$198,000	2016	-\$21,000	
2017	\$223,000	2017	-\$11,000	
2018	\$248,000	2018	\$11,000	
2019	\$231,000	2019	-\$26,000	
2020	\$211,000	2020	-\$11,000	
2021	\$418,000	2021	\$26,000	
2022	\$667,000	2022	\$60,000	
2023	\$858,000	2023	-\$26,000	Pre-Audit
2024	\$1,200,000	2024	\$10,000	Projected

OWA 2024 Revenue Summary (source and amount)



Revenue Source	Amount	Programs/Projects	Admin and Proj. Mgt. Time & Commitment	Notes
ECCC	\$301,000	Forest Inventory, Silvics Library, High Value Conservation, Municipal Bylaws	Moderate	Advances allowed/Reimbursement quick
NRCan - IMFN	\$270,000	IMFN 2025 Global Forum	Heavy	Advances allowed
MNRF	\$120,000	General (\$75,000), Forest Biomass, Silvics Library	Heavy	No advances/Reimbursement slow
Membership Dues	\$95,000	General : Net after Chapter transfers is \$62,700	Heavy	
EOMF	\$100,000	Forest Certification, Forest Inventory, General	Light	Advances allowed/Reimbursement quick
OPG	\$80,000	Farm Woodlot Management, Forest Inventory	Light	Advances allowed/Reimbursement at year-end (may change)
Annual OWA Conference	\$60,000	Conference expenditures; profit to general	Heavy	Chosen venue often requires downpayment by OWA
Corporate Partnerships/Contracts	\$42,000	General	Moderate	
Legacy Partnership Program	\$50,000	General	To be determined	Projected
The Ontario Woodlander	\$26,000	Woodlander expenses, general	Heavy	
Cooperatives	\$20,000	Cooperative expenses, general	Heavy	
Champion Donor Program	\$15,000	General	Moderate	Projected
Investment Income	\$8,000	General	Light	
Chapter Events (includes admin %)	\$8,000	Chapters, modest admin fee	Moderate	
Advertising	\$5,000	General	Light	
Total	\$1,200,000			

Note: General = Overhead



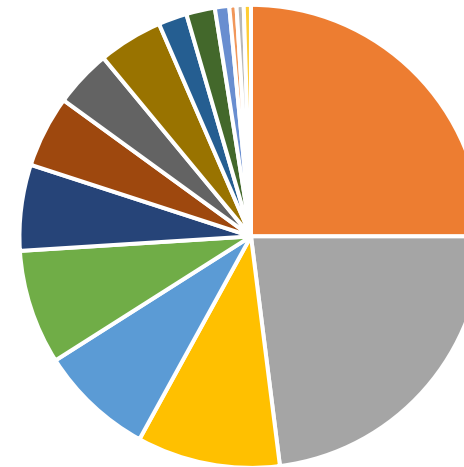
Revenue Breakdown 2024

Revenue Source

Revenue Per cent

ECCC	25.0%
NRCan - IMFN	23.0%
MNRF	10.0%
Membership Dues	8.0%
EOMF	8.0%
OPG	6.0%
Annual OWA Conference	5.0%
Corporate Partnerships/Contracts	4.0%
Legacy Partnership Program	4.5%
The Ontario Woodlander	2.0%
Cooperatives	2.0%
Champion Donor Program	1.0%
Investment Income	0.5%
Chapter Events (includes admin %)	0.5%
Advertising	0.5%
Total	100.0%

OWA Revenue Source Per Cent - 2024



- ECCC
- NRCan - IMFN
- MNRF
- Membership Dues
- EOMF
- OPG
- Annual OWA Conference
- Corporate Partnerships/Contracts
- Legacy Partnership Program
- The Ontario Woodlander
- Cooperatives
- Champion Donor Program
- Investment Income
- Chapter Events (includes admin %)
- Advertising

Leverage By Member and Chapter 2024

- Individual full membership (paper Woodlander)
 - \$50 vs. \$1.2M = **24,000X**
- Chapter with 150 members @\$50 X 66% (Chapter keeps 34%)
 - 150 X \$50 X .66 = \$4,950
 - \$4,950 vs. \$1.2M = **242X**



Discussion and Questions

Thanks!



ONTARIO
WOODLOT
ASSOCIATION



For more information:

john.pineau@ontariowoodlot.com

